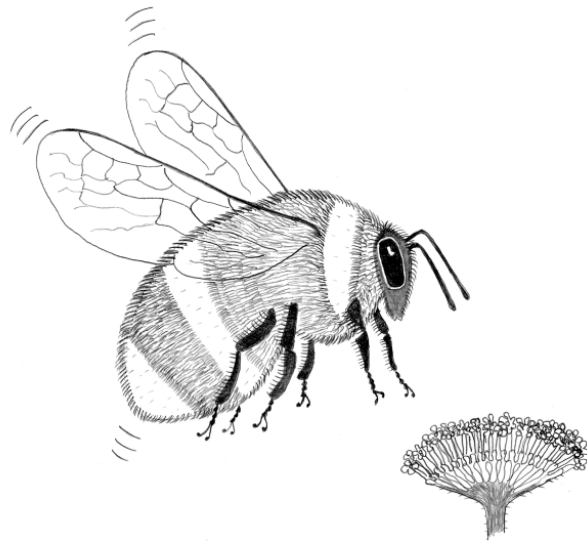


# Conversazione

*89<sup>th</sup> Annual Public Exhibition of Natural History*



*Cambridge Natural History Society  
(1857 – 2008)*

*Friday 13<sup>th</sup> June 2008  
1:00 pm – 4:00 pm*

*Saturday 14<sup>th</sup> &  
Sunday 15<sup>th</sup> June 2008  
11:00 am - 4:00 pm*



[www.cnhs.org.uk](http://www.cnhs.org.uk)

supported by



*Programme 50p*

# Welcome to the 89<sup>th</sup> Annual **Conversazione**

The *Conversazione* is the annual exhibition of the Cambridge Natural History Society. This is the largest exhibition of its kind in Cambridge, and covers all traditional aspects of natural history as well as modern biology and the environmental sciences.

'*Conversazione*' is an Italian word, roughly translated as 'at home'. It usually means a social event expressed as an exhibition by members of a society. The CNHS *Conversazione* evolved out of the meetings of the Society, which at the beginning of the 20<sup>th</sup> century consisted of lectures, preceded by displays of specimens shown by members, and discussed by the audience. The first *Conversazione* was held in 1913, but no meetings were held during the First World War. On the 12th May 1921 it was held in the Zoology Department, and this tradition has continued every year to the present day.

Exhibitors are as varied as their exhibits: local naturalists, artists, conservation groups, schools, members of the University and many others. Everyone is welcome!

We hope you enjoy the Society's annual 'at home', and invite you to come again next year. If you are interested in joining the Society, you will find more information on the back of this programme, and at the Society's display, which is near the Museum entrance to the lab.

Dr Toby Carter, President, Cambridge Natural History Society

Small donations towards the costs of staging  
the *Conversazione* are gratefully received.

**Before you leave, please sign the visitors' book...**

Numbers correspond to the floor plan on the last page.

**Foyer THE SOCIETY'S ANNUAL CONVERSAZIONE: 89 YEARS CONSECUTIVE EXHIBITIONS**

*Henry Tribe, CNHS.* The Society has records of every Programme of exhibitors and their exhibits since 1920 (bar 1949). Eight Conversazione Programmes; 1920/21, 1932, 1940, 1957, 1976, 1990, 2002 and 2007 are set out to show similarities and changes over the years. Some Conversazione photographs taken mainly in the 1990s are also shown

**Foyer ROGER ARGENTINE, TUDOR ALCHEMIST**

*Ron Hall.* An alchemist in Tudor clothes talking about science in the late 1500's.

**1 THE SOCIETY'S STAND**

*Toby Carter, President, Cambridge Natural History Society.*

**2 INTRODUCTION TO THE CNHS**

*Jon Shanklin, CNHS.* An introduction to the CNHS through selected items from its web pages, together with the history of the society and the Conversazione.

**3 THE COLDHAM'S COMMON SURVEY**

*Jon Shanklin, CNHS.* Some highlights of the Society's 2007 survey project, which covered Coldham's Common and the Barnwell LNRs.

**4 NATURE IN CAMBRIDGESHIRE**

*Vicki Harley, Cambridge.* The latest issue of the Journal for everyone interested in Cambridgeshire's natural history will be on sale. This year's issue is No. 50 and includes a wide range of topics (plants, insects, molluscs, mammals, book reviews etc), plus a comprehensive index to all 50 issues. Back numbers are also available.

**5 THE LIVERWORTS OF CAMBRIDGESHIRE**

*Jon Shanklin, CNHS.* Liverworts are primitive plants, and this poster shows all the species that are found in Cambridgeshire.

**6 ODYSSEY OF STOW-AWAY NOCTUID MOTHS TO SOUTHERN POLAR ISLANDS**

*Dave Barnes & Pete Convey, British Antarctic Survey.* Poster describing the journey of noctuid moths from South America to Antarctica on board a research vessel.

**9-11 FLY ME TO THE MOON**

*Robert Good, Lode, Cambridge.* Oil painting. A look at our desire to travel further, faster, sooner. Travel is a joyous exploration of the world around us but it can also damage the very places we most wish to visit. Life, it seems, is never simple.

**13 ANTARCTIC ICE CORES**

*Nerilie Abram, British Antarctic Survey.* Ice cores from Antarctica show details of the climate and atmosphere over 800,000 years.

**14 SLEEPING BEAUTY**

*Melody Clark, Roger Worland, Jelena Purac & Gordana Grubor-Lajsic, British Antarctic Survey.* Studies of the Arctic springtail show strategies for survival and preservation.

- 15 FROZEN IN TIME: FOSSILS FROM THE ANTARCTIC**  
*Lucy Wilson, Alex Tate & Alistair Crane, British Antarctic Survey.* This poster introduces the Type and Figured Fossil Collection at the British Antarctic Survey, which is available for on-line reference.
- 16 A NEW EOCENE FLORA FROM SEYMOUR ISLAND, ANTARCTICA**  
*Rosemary Stephens, Jane Francis, Alistair Crame & Alan Haywood, British Antarctic Survey.* The poster describes a fossil conifer from Antarctica, which resembles the modern monkey puzzle.
- 17-19 PHASMIDS FOR ALL**  
*Dorothy Floyd, Small-life Supplies.* Stick insects for sale, together with their proper cages, accessories and 'Keeping Stick Insects' books. Also caterpillars..
- 21 CONSERVATION GRAZING AT BARNWELL EAST NATURE RESERVE**  
*Ellis Selway, Cambridge City Council.* Grazing is proposed at the site to help control the extent of the scrub and to reduce the dominance of Michaelmas Daisy.
- 22 NORTH HERTS MUSEUM SERVICE**  
*David Hodges, Hitchin Museum and Art Gallery.* Material from the North Herts Museum Service, including animal specimens. Black squirrels, material from the educational loans service, photography of North Herts flora and fauna and information on the Physic Garden at Hitchin Museum.
- 24 ONE WORLD, MANY VOICES**  
*Rosemary Randall, Cambridge Carbon Footprint.* Cambridge People talk about climate change and what they are doing about it (posters).
- 25 HDRA ORGANIC GARDENING ASSOCIATION**  
*Jo Darlington, CNHS.* The Henry Doubleday Research Association promotes organic gardening, and the preservation of old and local varieties of fruit and vegetables.
- 26 WILDLIFE RECORDING IN CAMBRIDGESHIRE**  
*Christine Whinney, Cambridgeshire & Peterborough Biological Records Centre.* Find out what the Biological Records Centre is, what we do and how to get involved with lots of fun wildlife recording and surveying.
- 27 THE NATURAL HISTORY OF FERNS**  
*David Barden, CNHS.* Covering all aspects of these fascinating plants, including identification (pressed specimens are on display), habitat and distribution, and their curious life-cycle.
- 28-30 BUTTERFLY CONSERVATION**  
*Julia Napier, CNHS.* Case of butterflies; caterpillars, food plants and nectar sources, information sheets, posters and leaflets.

- 31-32 CAMBRIDGE REPTILE RESCUE - CAMBRIDGE FERRET WELFARE AND RESCUE**  
*Amanda Noviss, Cambridge Reptile Rescue.* Cambridge reptile rescue provides re-homing and rescue services within the Cambridge area for invertebrates, reptiles and arachnids. We are always happy to offer advice and will be displaying a number of reptile species including dragons and corn snakes. We will also provide information on the Cambridge ferret welfare Society and their rescue and re-homing work. Come along and meet some of our very cuddly ferrets.
- 33-34 INVERTS AND ARACHNIDS**  
*Amanda Noviss, The Pet Specialists.* As breeders of invertebrates, arachnids and reptiles we will be providing a display of mantids, arachnids and stick insects (with surplus stock available for purchase).
- 35-36 CARNIVOROUS PLANTS AND OTHER BIZARRE ADAPTATIONS IN THE PLANT WORLD**  
*Clarke Brunt, CNHS.* Carnivorous plants grow in areas short of nutrients, and supplement their diet by trapping insects.
- 37-38 CACTI AND SUCCULENT PLANTS**  
*Paul Hoxey, British Cactus and Succulent Society.* Plants adapted to areas of low rainfall often have bodies which can store water to survive prolonged periods of drought. Cacti are the most well known but many other species from unrelated plant families have similar features. Here we have a selection of cacti and other succulent plants from the deserts of the world.
- 39 NEW DEVELOPMENTS AT THE BOTANIC GARDEN**  
*John Parker, Cambridge University Botanic Garden.* Illustrations of the new laboratory designed and in progress at the Botanic Garden for the study of plant development and diversity.
- 40-41 BIRDWATCHING & BIRD STUDY ACTIVITIES IN CAMBRIDGESHIRE 2008-2011**  
*Louise Bacon.* Cambridgeshire Bird Club has a wide array of activities across the county - indoor meetings, field trips and organized surveys, including collaboration with the National BTO breeding and wintering atlas projects and our new swifts survey.
- 42 MAGOG DOWN**  
*Lucy Evans, Magog Trust.* Progress in restoration of arable land on Gog Magog Hills.
- 43 DOG WALK DIARIES, PARADISE AND BEYOND**  
*Anita Joysey, CNHS.* A photographic record of nature encountered whilst walking my dogs.
- 44 ANIMAL EXHIBIT: LEOPARD GECKO**  
*Anita Joysey, CNHS.* 'Tom' is a rescued gecko who lost his tail due to dehydration. Following rescue he has grown a new tail.
- 45 ANIMAL EXHIBIT: GIANT AFRICAN LANDSNAILS**  
*Anita Joysey, CNHS.* Come and meet Charlie & Lola, Giant African land snails who are classroom pets at Barton Primary School.

- 46 GET A BUZZ FROM BUMBLE BEES AND WASPS**  
*Henry Berman, CNHS.* Display panels with specimens and leaflets aiming to encourage people to take a second look at some of our prettiest and possibly our most feared insects.
- 48 WORKING WITH WILDLIFE: POLECATS BREEDING PROGRAMME & HEDGEHOG HOSPITAL**  
*Lainie Sweetman, Shepreth Wildlife Park.* Basic information on our Education/Outreach Programme (Hedgehogs). Potted history of Park and its future in conservation of endangered species/highlighting animal charities we support.
- 50 WHAT'S THAT IN MY SOCKS ?**  
*Sarah Cook and Denise Ginsberg, Agricultural Development & Advisory Service, Boxworth.* Brome grasses, uses, problems, identification.
- 51 STEM CANKER ON OILSEED RAPE INCREASED BY GLOBAL WARMING.**  
*Peter Gladders (with Rothamsted Research), ADAS Boxworth.* Stem canker is the most important disease of oilseed rape in the UK. If there are increases in temperature as predicted under Climate Change scenarios, stem canker will become more damaging. The predicted changes are illustrated by a series of maps on the poster. Live plant material will be used to show stem canker symptoms.
- 55-58 ZOOLOGY AND NATURAL HISTORY JOURNALS**  
*Taylor & Francis, Taylor & Francis, Abingdon, Oxon.* Taylor & Francis, founded in the City of London in 1798, is the oldest commercial journals publisher in the world, and one of the leading global academic publishers. The Taylor & Francis Group publishes more than 1000 journals and around 1,800 new books each year.
- 59 AN INTRODUCTION TO TARDIGRADES (WATER BEARS) AND OTHER MICROFAUNA**  
*Cass Bromley, Anglia Ruskin University.* Fascinating microfauna to examine through the microscope.
- 60 SPECIALITY MUSHROOMS IN HONG KONG**  
*Sandra Jane Chapman, National Institute for Agricultural Botany.* Exotic mushrooms have been consumed from time immemorial and are considered a delicacy by the connoisseurs of food. They have a unique flavour, are a good source of nutrients and are highly valued for their mineral qualities. This exhibit highlights some of the common mushrooms consumed in Hong Kong with special reference to the mineral zinc.
- 61 REED STRENGTH FOR THATCHING**  
*Sylvia Haslam, Cambridge University Department of Plant Sciences.* Good reed thatch needs good quality reed, good storage and a good thatcher. One character of good quality reed is strength "if it crumbles in your hand it will crumble on the roof".
- 62-63 THE WORLD OF LICHENS**  
*Ivan Pedley, British Lichen Society.*
- 64 SOME GEMS ARE GREEN**  
*Gill Mallett, Gem Jewellery.* Some valuable gems are green in colour and there are many many other attractive and decorative rocks to be admired with green as the basic colour or green caused by impurities in the mineral.

- 65 NATIONAL INSECT WEEK and UK LADYBIRD SURVEY**  
*Peter Brown, CEH Monks Wood and Anglia Ruskin University.* The UK has over 23,000 species of insect. To celebrate this amazing diversity, National Insect Week is back! From 23rd to 29th June there are events up and down the country where you can learn about some of the fascinating insects on your doorstep. Find out about events running locally. Also come and find out about the UK Ladybird Survey.
- 66 WHERE TO SEE WILDLIFE IN AND AROUND CAMBRIDGE**  
*Ben Phalan, Conservation Science Group, Cambridge University Department of Zoology.* A map of Cambridge with information on wildlife sites which are easily accessible within and near the city. There will be an opportunity for people visiting the stand to add information, so this exhibit will hopefully improve and develop over the three days, and year by year.
- 68-69 INSECTS ARE WONDERFUL**  
*Roger Northfield, Cambridge.* Photographs and some living insects.
- 70 WHAT DO IDENTIFICATION KEYS TELL US?**  
*Henry Disney, Department of Zoology.* An example of how a key revealed the existence of a new species.
- 71 AERIAL PHOTOGRAPHS**  
*Rose Desmond & Anna Betts, C.U. Unit of Landscape Modelling.*
- 72 PHOTOGRAPHS OF VARIOUS FRESHWATER ALGAE**  
*Hilary Belcher and Chris Carter, CNHS and Northampton.* Photographs showing the diversity among this fascinating but sadly neglected group of organisms. Microscopists please note.
- 73 THE HIDDEN WORLD OF SLIME**  
*John Holden, CNHS.* An exploration of the almost microscopic world of the Myxomycetes, or Slime Moulds.
- 74 THE PINE PROCESSIONARY CATERPILLAR**  
*John Holden, CNHS.* A brief description of its life and human impact, with pictures of the caterpillars.
- 75 SOME FUNGUS MODELS FROM THE BMS TRAVELLING EXHIBITION**  
*Henry Tribe, British Mycological Society.* The larger fungi can not be grown to order and good models are needed to demonstrate them at any time of year. Some of the 100 species represented as models in the British Mycological Society's Travelling Exhibition are shown.
- 76 ON THE OCCUPATION OF HOLES**  
*Henry Tribe, CNHS.* Hibernation of the housefly. Mould problems in the modern refrigerator.
- 77 MAGGOTS CLEANSE WOUNDS**  
*Johanna Bennet, ZooBiotic Ltd, Bridgend, Wales.* Maggots of the greenbottle fly (*Lucilia sericata*) prepared under aseptic conditions and microbiologically sterile are used in wound management for debridement of tissue. Live maggots, posted to arrive on the morning of 13th June, are shown together with the associated dressings, illustrated application guides and further information.

- 79-80 NATURAL HISTORY OF MOLECULES**  
*Henry Tribe, CNHS.* All life is composed of molecules and many are now household words, thus DNA, proteins, ATP. Models representing molecules magnified two million times can give an impression of how they act in concert with one another.
- 81 DEGRADATION OF PLASTIC CONTAINERS**  
*Henry Tribe, CNHS.* On bags, bottles and beverage containers.
- 82 URBAN FOXES IN OUR GARDEN**  
*Henry & Katharina Tribe, CNHS.* Photographs taken this May by a movement-sensitive flash camera show the comings and goings of foxes in our Cambridge garden.
- 87-89 WILDLIFE ART AND ILLUSTRATIONS**  
*Michael C. Wood, Cambridge.* A display of recent natural history paintings, prints and interpretation, including work for the Tubney Fen extension to Wicken Fen.
- 90 SCENT TRAILING IN ROMAN SNAILS (HELIX POMATIA)**  
*Sarah Spooner, Homerton College, Cambridge.*
- 91 THE HONEY BEE AND PRODUCTS FROM THE HIVE**  
*John Witter, Cambridge Beekeepers Association.* Live bees in an observation hive, examples of honey comb building, beekeeping tools and hive products for sale.
- 92 DARWIN CORRESPONDENCE PROJECT**  
*Rosemary Clarkson, Darwin Correspondence Project.* The Darwin Correspondence Project is publishing the definitive edition of letters to and from Charles Darwin (1809-1882). Begun in 1974 by Frederick Burkhardt and Sydney Smith, it has to date produced fifteen out of thirty projected volumes; several compilations are being produced for 2009 to celebrate the bicentenary of Darwin's birth and the 150th anniversary of the publication of "The Origin of Species".
- 97 NATURAL HISTORY AT THE WHIPPLE MUSEUM**  
*Ruth Horry, Whipple Museum.* The Whipple Museum has a large collection of material related to natural history, including models of animals and plants, teaching diagrams and experimental apparatus. Much of the material was used within the University of Cambridge in the 19th and 20th centuries. Several items from the Collection are on display.

..... plus last minute extras.



---

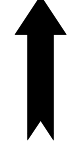
## NOTES



**Would you like to exhibit at next year's Conversazione? – If so, then please sign the visitors book and indicate that you would like details. Information about Conversazione 2008 will be sent out by Christmas.**

**Contact: [Exhibition@cnhs.org.uk](mailto:Exhibition@cnhs.org.uk)**

Entrance



Zoology  
Museum

Foyer



Tea  
Table

Toilets



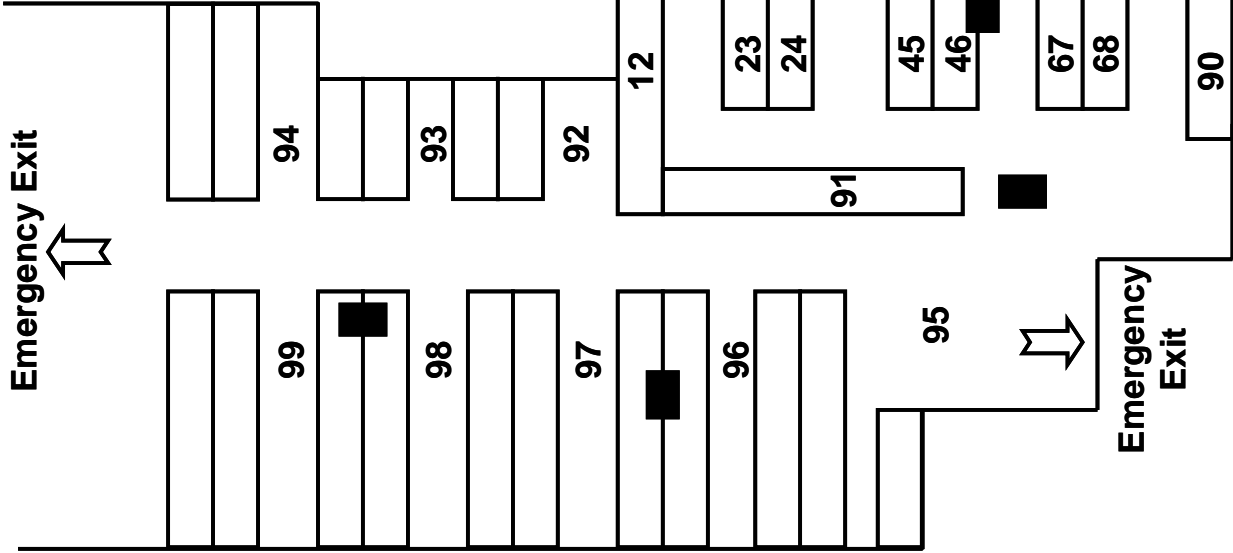
Floor Plan

# Conversazione

2008



## Cambridge Natural History Society



Emergency Exit



94

93

92

99

98

97

96

95

Emergency  
Exit



1

2

3

4

5

6

7

8

9

10

11

12

16

15

14

13

31

32

33

34

38

37

36

35

53

54

55

56

60

59

58

57

75

76

77

78

79

80

81

82

83

84

85

86

87

88

89

90

20

19

18

17

27

28

29

30

42

41

40

39

49

50

51

52

64

63

62

61

71

72

73

74

23

22

21

24

25

26

45

44

43

46

47

48

67

66

65

68

69

70



## Why not Visit ...

**The University Zoology Museum** is open to the public during the exhibition. It is considered to be one of the finest zoological museums in the country, with outstanding displays of specimens from insects to elephants.

### **The Finback Whale**

You can't miss it. Over 21 metres long, and weighing in at 80 tonnes when alive, this is the skeleton of one of the largest creatures alive today.

### **The *Sophora* Tree**

Visit the Society's tree, a fine specimen of *Sophora japonica* planted in 1957 to mark the Society's centennial year. Leave the laboratory, cross Downing Street, and enter the courtyard opposite the Zoology Department. The Sophora tree is on your right in the centre of the lawn.

### **Acknowledgements**

The *Conversazione* is entirely dependent on the goodwill and co-operation of many people and the Society would like to thank everyone who has given of their time and effort to the event, whether as a volunteer, or as an exhibitor. In particular, thanks are due to: Professor Malcolm Burrows for allowing us to use the zoology laboratory, Neal Maskell for helping the event to run smoothly, the Department of Life Sciences at Anglia Ruskin University for contributing towards the cost of the event, Henry Tribe for organising the event, Anita Joysey for the cover drawing and Cambridge Sustainable City for their support.

For more information about the Society why not visit our website?

[WWW.CNHS.ORG.UK](http://WWW.CNHS.ORG.UK)

# Cambridge Natural History Society

## Membership

CNHS membership is open to anyone with an interest in natural history. Both the public and members of the Universities play important roles in the activities of the society. Recent events have included talks on a wide variety of topics, joint meetings with the Wildlife Trust and field trips.

For a small membership fee, you will be able to attend all of our activities and will be kept informed of forthcoming events by termly programme cards.

Join today at the Society's Display, or fill in the form below and send it to:

Dr HT Tribe, 198 Gilbert Rd, Cambridge CB4 3PB



.....  
Membership application form

Name (Capitals please) .....

Full address: .....

.....

.....

.....

Telephone .....

Email .....

I would like to join Cambridge Natural History Society.

I enclose a cheque (made payable to Cambridge Natural History Society) to cover my subscription for (*please circle*):

1 Year  
(£5.00)

3 Years  
(£10.00)

Life  
(£100)

Signed .....

Date .....

The AGM of the Cambridge Natural History Society will be held in the Elementary Laboratory of the Zoology Department at 4.15pm on Saturday the 14th of June. All are welcome to attend.